



**TRANSPORTATION CABINET**

Frankfort, Kentucky 40622  
www.transportation.ky.gov/

**Steven L. Beshear**  
Governor

**Michael W. Hancock, P.E.**  
Secretary

December 1, 2010

CALL NO. 100  
CONTRACT ID NO. 101344  
ADDENDUM # 1

Subject: Clay County, NCPD 3000 (873)  
Letting December 10, 2010

- (1) Revised - Table of Contents - Page 2 of 129
- (2) Added - Option A - Page 15 of 129
- (3) Added - Special Note - Pages 16(a)-16(b) of 129
- (4) Revised - Wage Rates - Pages 108-117(b) of 129
- (5) Revised - Bid Items - Pages 122-129 of 129

Proposal revisions are available at <http://transportation.ky.gov/contract/>.

If you have any questions, please contact us at 502-564-3500.

Sincerely,

A handwritten signature in blue ink that reads "Ryan Griffith".

Ryan Griffith  
Director  
Division of Construction Procurement

RG:ks  
Enclosures



An Equal Opportunity Employer M/F/D

## TABLE OF CONTENTS

PART I	<b>SCOPE OF WORK</b> <ul style="list-style-type: none"><li>• PROJECT(S), COMPLETION DATE(S), &amp; LIQUIDATED DAMAGES</li><li>• CONTRACT NOTES</li><li>• FEDERAL CONTRACT NOTES</li><li>• TRAINEES</li><li>• OPTION A</li><li>• SPECIAL NOTE(S) APPLICABLE TO PROJECT</li><li>• WASTE AND BORROWED SITES</li><li>• RIGHT OF WAY NOTES</li><li>• UTILITY CLEARANCE</li><li>• KPDES STORM WATER PERMIT, BMP AND NOI</li><li>• COMMUNICATING ALL PROMISES</li><li>• PERMIT(S)</li></ul>
PART II	<b>SPECIFICATIONS AND STANDARD DRAWINGS</b> <ul style="list-style-type: none"><li>• SPECIFICATIONS REFERENCE</li><li>• SUPPLEMENTAL SPECIFICATIONS</li><li>• [SN-1I] PORTABLE CHANGEABLE SIGNS</li><li>• [SN-11D] ROCK BLASTING</li><li>• [SN-11E] BORING JACKING STEEL PIPE WITHOUT CARRIER PIPE</li><li>• [SP-69] EMBANKMENT AT BRIDGE END BENT STRUCTURES</li></ul>
PART III	<b>EMPLOYMENT, WAGE AND RECORD REQUIREMENTS</b> <ul style="list-style-type: none"><li>• FEDERAL-AID CONSTRUCTION CONTRACTS - FHWA 1273</li><li>• NONDISCRIMINATION OF EMPLOYEES</li><li>• EXECUTIVE BRANCH CODE OF ETHICS</li><li>• TRAINING SPECIAL PROVISIONS</li><li>• PROJECT WAGE RATES</li><li>• NOTICE OF REQUIREMENT FOR AFFIRMATIVE ACTION TO ENSURE EEO</li></ul>
PART IV	<b>INSURANCE</b>
PART V	<b>BID ITEMS</b>

**TRAINEES**

In Compliance with the "TRAINING SPECIAL PROVISION" included in Part III of the Proposal, the Contractor will be required to employ 2 trainee(s) ( OFF-ROAD ARTICULATING TRUCK DRIVERS ) for this contract.

**OPTION A**

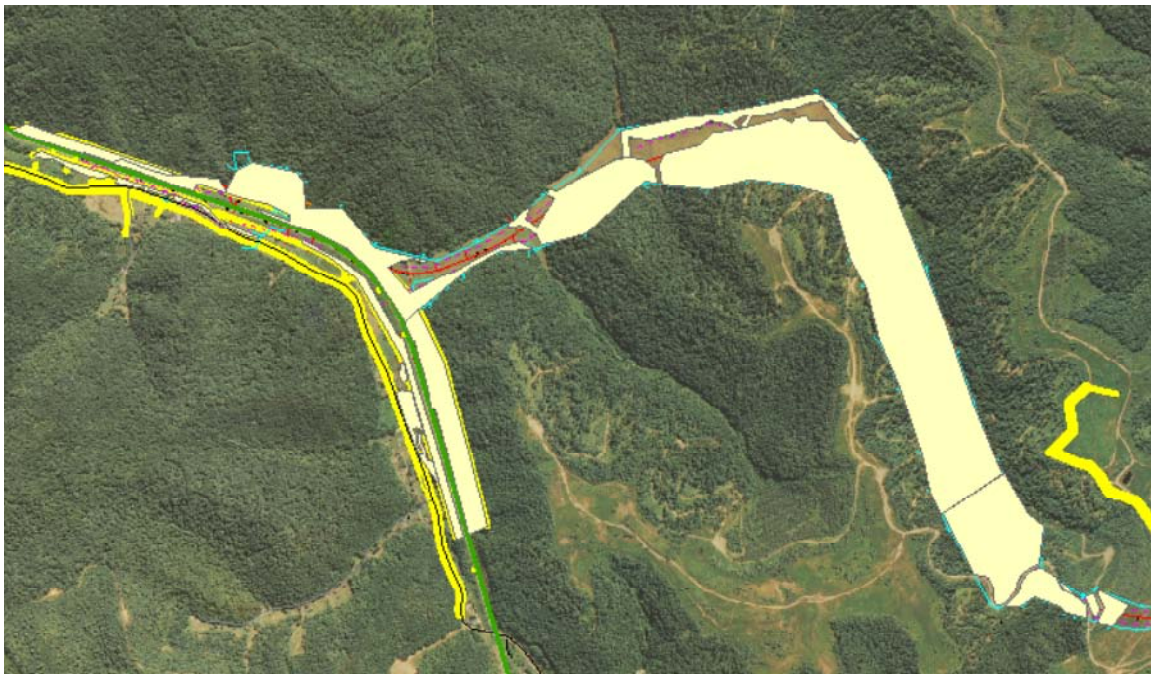
The Contractor is advised that the compaction of asphalt mixtures furnished for driving lanes and ramps, at 25mm (1 inch) or greater, on this project will be accepted according to OPTION A in accordance with Section 402 and Section 403 of the current Standard Specification. Joint cores as described in subsection 402.03.02 are required for surface mixtures only. The compaction of all other asphalt mixtures will be accepted by OPTION B.

**SPECIAL NOTE CONCERNING  
THE ENDANGERED SPECIES ACT  
CRITICAL HABITAT FOR INDIANA BAT**

**CLAY COUNTY  
INDUSTRIAL PARK ACCESS ROAD  
HRP TO ELK HILL INDUSTRIAL PARK  
ITEM NO. 11-8002.01**

**“THIS SHALL SERVE AS NOTICE TO THE CONTRACTOR THAT AN INDIANA BAT CONSERVATION MEMORANDUM OF AGREEMENT (IBCMOA) IS IN EFFECT FOR THIS PROJECT.**

**CONTAINED WITHIN THE IBCMOA IS THE AGREEMENT BETWEEN KYTC AND THE UNITED STATES FISH & WILDLIFE SERVICE (USFWS) WHICH SPECIFIES THE CONTRACTOR SHALL NOT PERFORM TREE CUTTING AND/OR CLEARING DURING THE PERIOD BETWEEN JUNE 1 AND JULY 31. THE CONTRACTOR IS FREE TO ENGAGE IN THESE ACTIVITIES AT ANY TIME OUTSIDE OF THIS TWO-MONTH RESTRICTION.**



Item No. 11-8002.01  
Clay County  
NCPD 3000 (873)

### SPECIAL NOTE FOR GEOGRID REINFORCEMENT

#### DESCRIPTION

This special note covers geogrid used for reinforcement of subgrade and aggregate bases

#### MATERIALS

Furnish Tensar TX5 Triaxial Geogrid or approved equivalent. Any alternate submitted by the Contractor for consideration should include detailed testing information and performance history. The geogrid for this project was included in the structural calculations to achieve the desired pavement structure based on the specific soil and traffic information. The information provided should include the improvement to the resilient modulus of the aggregate layer.

Ensure that each roll is labeled with the manufacturer's name, product type, lot number, roll number, manufactured date, and roll dimension.

#### CONSTRUCTION

1. Geogrid Representative. Ensure that a representative of the geogrid manufacturer is on the project when work begins, and remains on call as the project progresses, to advise the Engineer.
2. Surface Preparation. Prepare the surface according to Section 207 and Section 208.
3. Geogrid Placement. Place geogrid at the proper elevation and alignment, in continuous strips with overlapping according to the manufacturer's recommendations. Verify the geogrid orientation (roll direction). Geogrid may be temporarily secured in place with staples, pins, sand bags or backfill as required by fill properties, fill placement procedures, or weather conditions as the Engineer directs.
4. Aggregate Placement. Place aggregate over the geogrid according to the Contract. Place, spread, and compact the aggregate in such a manner that minimizes the development of wrinkles and movement in the geogrid. The Department will require a minimum loose fill thickness of 10 inches prior to operation of tracked vehicles over the geogrid. Keep the turning of tracked vehicles to a minimum to prevent displacement of the fill and damage to the geogrid. Rubber tired equipment may pass over the geogrid reinforcement at slow speeds (less than 10 mph) when integrally-formed geogrid is used, and the subgrade is competent to support wheel loading without deformation. Avoid sudden braking and sharp turning movements. Repair any damage caused during placement or by vehicles.

#### MEASUREMENT

The Department will measure the quantity of geogrid in square yards. The Department will not measure providing the geogrid manufacturer's representative for payment and will consider it incidental to the geogrid.

#### PAYMENT

The Cabinet will make payment for the completed and accepted quantities under the following:

<u>Code</u>	<u>Pay Item</u>	<u>Pay Unit</u>
005	Geogrid Reinforcement for Subgrade	Square Yard

The Cabinet will consider payment as full compensation for all work required in this note.



Tender.....	\$ 19.80	8.50
(04) Asphalt Lute and Rakerman, Side Rail Setter..	\$ 19.85	8.50
(05) Gunnite Nozzxleman, Gunnite Operator.....	\$ 19.95	8.50
(06) Tunnel Laborer (Free Air).....	\$ 20.00	8.50
(07) Tunnel Mucker (Free Air).....	\$ 20.05	8.50
(08) Tunnel Miner, Blaster and Driller (free Air).....	\$ 20.40	8.50
(09) Caisson Worker.....	\$ 20.95	8.50
(10) Powderman.....	\$ 21.05	8.50
(11) Drill Operator of Percussion Type Drills powered and propelled by an independent air supply...	\$ 22.25	8.50

PAINTER

All Excluding Bridges.....	\$ 19.92	9.57
Bridges.....	\$ 23.92	10.07

PLUMBER.....\$ 22.52 7.80

POWER EQUIPMENT OPERATOR:

GROUP 1.....	\$ 24.10	8.50
GROUP 2.....	\$ 21.20	8.50
GROUP 3.....	\$ 21.40	8.50
GROUP 4.....	\$ 20.79	8.50

POWER EQUIPMENT OPERATOR CLASSIFICATIONS:

GROUP 1: Auto Patrol, Batcher Plant, Bituminous Paver, Cable-Way, Clamshell, Concrete Mixer (21 cu ft or over), Concrete Pump, Crane, Crusher Plant, Derrick, Derrick Boat, Ditching and Trenching machine, Dragline, Dredge Engineer, Elevating Grader and all types of Loaders, Hoe-type Machine, Hoisting Engine, Locomotive, LeTourneau or carry-all scoop, Bulldozer, Mechanic, Orangepeel Bucket, Piledriver Operator, Power Blade, Roller (Bituminous), Roller (earth), Roller (Rock), Scarifier, Shovel, Tractor Shovel, Truck Crane, Well Point, Winch Truck, Push Dozer, Grout Pump, High Lift, Fork Lift (regardless of lift height), all types of Boom Cats, Multiple Operator, Core Drill, Tow or Push Boat, A-Frame Winch Truck, Concrete Paver, Grade-All, Hoist, m Hyster, Material Pump, Pumpcrete, Ross Carrier, Sheepfoot, Sideboom, Throttle-Valve man, Rotary Drill, Power Generator, Mucking Machine, Rock Spreader attached to Equipment, Scoopmobile, KeCal Loader, Tower Cranes, Hydrocrane, Tugger, Backfiller Gurries, Self-propelled Compactor, Self-Contained Hydraulic Percussion Drill.

GROUP 2: All Air Compressors (200 cu ft/min or greater), Bituminous Mixer, Concrete Mixer (under 212 cu ft), Welding Machine, Form Grader, Tractor (50 hp and over), Bulll Float, Finish Machine, Outboard Motor Boat, Brakeman, Mechanic Tender, Whirly Oiler, Tract-air, Road Widening Trencher, Articulating Trucks

GROUP 3: Greaser on Grease Facilities servicing Heavy Equipment

GROUP 4: Bituminous Distributor, Cement Gun, Conveyor, Mud Jack, Paving Joint Machine, Pump, Tamping Machine, Tractor (under 50 hp), Vibrator, Oiler, Air Compressor (under 200 cu ft per minute), Concrete Saw, Burlap and Curing Machine, Hydro Seeder, Power Form Handling Equipment, Deckhand Oiler, hydraulic Post Driver

SHEET METAL WORKER.....	\$ 20.40	7.80
TRUCK DRIVER		
(01) Truck Tender and Warehouseman.....	\$ 19.70	8.50
(02) Driver, Winch Truck and A-Frame when used in Transporting Materials.....	\$ 19.80	8.50
(03) Driver (Semi-trailer or Pole Trailer), Driver (Dump Truck, Tandem Axle), Driver of Distributor.....	\$ 19.90	8.50
(04) Driver on Mixer Trucks (all types).....	\$ 19.95	8.50
(05) Truck Mechanic.....	\$ 20.00	8.50
(06) Driver (3 tons and under), Tire Changer, Truck Mechanic Tender.....	\$ 20.03	8.50
(07) Driver on Pavement Breakers.....	\$ 20.05	8.50
(08) Driver (over 3 tons), Driver (Truck Mounted Rotary Drill).....	\$ 20.24	8.50
(09) Driver, Euclid and other Heavy Earth Moving Equipment.....	\$ 20.81	8.50
(10) Greaser on greasing facilities.....	\$ 20.90	8.50

-----  
WELDERS - Receive rate prescribed for craft performing operation to which welding is incidental.

=====  
Unlisted classifications needed for work not included within the scope of the classifications listed may be added after award only as provided in the labor standards contract clauses (29 CFR 5.5(a)(1)(ii)).

-----  
--  
In the listing above, the "SU" designation means that rates listed under the identifier do not reflect collectively bargained wage and fringe benefit rates. Other designations indicate unions whose rates have been determined to be prevailing.



-----  
--

WAGE DETERMINATION APPEALS PROCESS

1.) Has there been an initial decision in the matter? This can be:

- \* an existing published wage determination
- \* a survey underlying a wage determination
- \* a Wage and Hour Division letter setting forth a position on a wage determination matter
- \* a conformance (additional classification and rate) ruling

On survey related matters, initial contact, including requests for summaries of surveys, should be with the Wage and Hour Regional Office for the area in which the survey was conducted because those Regional Offices have responsibility for the Davis-Bacon survey program. If the response from this initial contact is not satisfactory, then the process described in 2.) and 3.) should be followed.

With regard to any other matter not yet ripe for the formal process described here, initial contact should be with the Branch of Construction Wage Determinations. Write to:

Branch of Construction Wage Determinations  
Wage and Hour Division  
U.S. Department of Labor  
200 Constitution Avenue, N.W.  
Washington, DC 20210

2.) If the answer to the question in 1.) is yes, then an interested party (those affected by the action) can request review and reconsideration from the Wage and Hour Administrator (See 29 CFR Part 1.8 and 29 CFR Part 7).  
Write to:

Wage and Hour Administrator  
U.S. Department of Labor  
200 Constitution Avenue, N.W.  
Washington, DC 20210

The request should be accompanied by a full statement of the interested party's position and by any information (wage payment data, project description, area practice material, etc.) that the requestor considers relevant to the issue.

3.) If the decision of the Administrator is not favorable, an interested party may appeal directly to the Administrative Review Board (formerly the Wage Appeals Board). Write to:

Administrative Review Board  
U.S. Department of Labor  
200 Constitution Avenue, N.W.  
Washington, DC 20210

4.) All decisions by the Administrative Review Board are final.

END OF GENERAL DECISION

**Kentucky Determination No. CR-10-II-HWY dated July 12, 2010**

	<b>BASIC HOURLY RATES</b>	<b>FRINGE BENEFIT PAYMENTS COMBINED</b>
--	-----------------------------------	-------------------------------------------------

**CRAFTS:**

Boilermakers .....	24.65	12.94
Bricklayers.....	22.90	8.50
Stone Mason.....	21.50	8.50
Carpenters .....	21.40	8.50
Cement Masons .....	21.25	8.50
Electricians .....	*29.26	10.53

\*When workmen are required to work from bosom chairs, trusses, stacks, tanks, scaffolds, catwalks, radio and T.V. towers, structural steel (open, unprotected, unfloored raw steel), and bridges or similar hazardous locations where workmen are subject to a direct fall, except where using JLG's and bucket trucks up to 75 feet: Add 25% to workman's base rate for 50 to 75 feet, and add 50% to workman's base rate for over 75 feet.

Ironworkers: Structural.....	21.50	8.50
Ironworkers: Reinforcing.....	21.30	8.50
Painters:		
All Excluding Bridges .....	19.92	9.57
Bridges .....	23.92	10.07
Piledrivers.....	21.05	8.50
Plumbers.....	22.52	7.80
Sheet Metal .....	20.40	7.80
Welders- Receive rate for craft in which welding is incidental.		

**LABORERS:**

General Laborer, Flagman, Steam Jenny.	<b>BASE RATE</b> .....	19.45
	<b>FRINGE BENEFITS</b> .....	8.50

Batch Truck Dumper, Deck Hand or Scow Man,  
Hand Blade Operator.

	<b>BASE RATE</b> .....	19.70
	<b>FRINGE BENEFITS</b> .....	8.50

**Kentucky Determination No. CR-10-II-HWY dated July 12, 2010**

**LABORERS:** (continued)

Power Driven Tool Operator of the following: Wagon Drill, Chain Saw, Sand Blaster, Concrete Chipper, Pavement Breaker, Vibrator, Power Wheelbarrow, Power Buggy, Sewer Pipe Layer, Bottom Men, Dry Cement Handler, Concrete Rubber, Mason Tender.

**BASE RATE** ..... 19.80

**FRINGE BENEFITS** ..... 8.50

Asphalt Lute and Rakerman, Side Rail Setter.

**BASE RATE** ..... 19.85

**FRINGE BENEFITS** ..... 8.50

Gunnite Nozzle Man, Gunnite Operator.

**BASE RATE** ..... 19.95

**FRINGE BENEFITS** ..... 8.50

Tunnel Laborer (Free Air).

**BASE RATE** ..... 20.00

**FRINGE BENEFITS** ..... 8.50

Tunnel Mucker (Free Air).

**BASE RATE** ..... 20.05

**FRINGE BENEFITS** ..... 8.50

Tunnel Miner, Blaster and Driller (Free Air).

**BASE RATE** ..... 20.40

**FRINGE BENEFITS** ..... 8.50

Caisson Worker

**BASE RATE** ..... 20.95

**FRINGE BENEFITS** ..... 8.50

Powderman

**BASE RATE** ..... 21.05

**FRINGE BENEFITS** ..... 8.50

Drill Operator of Percussion type Drills which are both powered and propelled by an independent air supply.

**BASE RATE** ..... 22.25

**FRINGE BENEFITS** ..... 8.50

**Kentucky Determination No. CR-10-II-HWY dated July 12, 2010**

**TRUCK DRIVERS AND RELATED CLASSIFICATIONS:**

Truck helper and Warehouseman.	<b>BASE RATE</b> ..... 19.70 <b>FRINGE BENEFITS</b> ..... 8.50
Driver, Winch Truck and A-Frame when used in transporting materials.	<b>BASE RATE</b> ..... 19.80 <b>FRINGE BENEFITS</b> ..... 8.50
Driver (Semi-Trailer or Pole Trailer), Driver (Dump Truck, Tandem Axle), Driver of Distributor.	<b>BASE RATE</b> ..... 19.90 <b>FRINGE BENEFITS</b> ..... 8.50
Driver on Mixer Trucks (All Types).	<b>BASE RATE</b> ..... 19.95 <b>FRINGE BENEFITS</b> ..... 8.50
Truck Mechanic	<b>BASE RATE</b> ..... 20.00 <b>FRINGE BENEFITS</b> ..... 8.50
Driver (3 tons and under), Tire Changer and Truck Mechanic Helper.	<b>BASE RATE</b> ..... 20.03 <b>FRINGE BENEFITS</b> ..... 8.50
Driver on Pavement Breakers.	<b>BASE RATE</b> ..... 20.05 <b>FRINGE BENEFITS</b> ..... 8.50
Driver (over 3 tons), Driver (Truck Mounted Rotary Drill).	<b>BASE RATE</b> ..... 20.24 <b>FRINGE BENEFITS</b> ..... 8.50
Driver, Euclid and other Heavy Earth Moving Equipment and Low Boy.	<b>BASE RATE</b> ..... 20.81 <b>FRINGE BENEFITS</b> ..... 8.50
Greaser on Greasing Facilities.	<b>BASE RATE</b> ..... 20.90 <b>FRINGE BENEFITS</b> ..... 8.50

**Kentucky Determination No. CR-10-II-HWY dated July 12, 2010**

**OPERATING ENGINEERS:**

**GROUP A:**

Auto Patrol, Batch Plant, Bituminous Paver, Cable-Way, Clamshell, Concrete Mixer (21 cu. ft. or over), Concrete Pump, Crane, Crusher Plant, Derrick, Derrick Boat, Ditching and Trenching Machine, Dragline, Dredge Engineer, Elevator (regardless of ownership when used for hoisting any building material), Elevating Grader and all types of Loaders, Hoe-Type Machine, Hoisting Engine, Locomotive, LeTourneau or Carry-All Scoop, Bulldozer, Mechanic, Orangepeel Bucket, Piledriver, Power Blade, Roller (Bituminous), Roller (Earth), Roller (Rock), Scarifier, Shovel, Tractor Shovel, Truck Crane, Well Points, Winch Truck, Push Dozer, Grout Pump, High Lift, Fork Lift (regardless of lift height), all types of Boom Cats, Multiple Operator, Core Drill, Tow or Push Boat, A-Frame Winch Truck, Concrete Paver, Gradeall, Hoist, Hyster, Material Pump, Pumpcrete, Ross Carrier, Sheep Foot, Sideboom, Throttle-Valve Man, Rotary Drill, Power Generator, Mucking Machine, Rock Spreader attached to equipment, Scoopmobile, KeCal Loader, Tower Cranes (French, German and other types), Hydrocrane, Tugger, Backfiller, Gurries, Self-Propelled Compactor, Self-Contained Hydraulic Percussion Drill.

**BASE RATE ..... 24.10**  
**FRINGE BENEFITS ..... 8.50**

**GROUP B:**

All Air Compressors (200 cu. ft. per min. or greater capacity), Bituminous Mixer, Concrete Mixer (under 21 cu. ft.), Welding Machine, Form Grader, Tractor (50 H.P. and over), Bull Float, Finish Machine, Outboard Motor Boat, Brakeman, Mechanic Helper, Whirley Oiler, Tractair and Road Widening Trencher, Articulating Trucks.

**BASE RATE ..... 21.20**  
**FRINGE BENEFITS ..... 8.50**

**GROUP B2:**

Greaser on grease facilities servicing heavy equipment.

**BASE RATE ..... 21.40**  
**FRINGE BENEFITS ..... 8.50**

**GROUP C:**

Bituminous Distributor, Cement Gun, Conveyor, Mud Jack, Paving Joint Machine, Pump, Tamping Machine, Tractors (under 50 H.P.), Vibrator, Oiler, Air Compressors (under 200 cu. ft. per min. capacity), Concrete Saw, Burlap and Curing Machine, Hydro Seeder, Power Form Handling Equipment, Deckhand Oiler, Hydraulic Post Driver.

**BASE RATE ..... 20.79**  
**FRINGE BENEFITS ..... 8.50**

**TRANSPORTATION CABINET  
DIVISION OF CONSTRUCTION PROCUREMENT  
COMPLIANCE SECTION  
PROJECT WAGE RATES**

---

Fringe benefit amounts are applicable for all hours worked except when otherwise noted.

No laborer, workman or mechanic shall be paid at a rate less than that of the General Laborer except those classified as bona fide apprentices registered with the Kentucky State Apprenticeship Supervisor unless otherwise specified in this schedule of wage rates.

These rates are listed pursuant to the Kentucky Determination No. CR-010-II HWY dated July 12, 2010. Apprentices or trainees shall be permitted to work as such subject to Administrative Regulations adopted by the Commissioner of Workplace Standards. Copies of these regulations will be furnished upon request from any interested person.

Before using apprentices on the job the contractor shall present to the Contracting Officer written evidence of registration of such employees in a program of a State apprenticeship and training agency approved and recognized by the U. S. Bureau of Apprenticeship and Training. In the absence of such a State agency, the contractor shall submit evidence of approval and registration by the U. S. Bureau of Apprenticeship and Training.

The contractor shall submit to the Contracting Officer, written evidence of the established apprenticeship-journeyman ratios and wage rates in the project area, which will be the basis for establishing such ratios and rates for the project under the applicable contract provisions.

**TRANSPORTATION CABINET  
DIVISION OF CONSTRUCTION PROCUREMENT  
COMPLIANCE SECTION  
PROJECT WAGE RATES**

---

**TO: EMPLOYERS/EMPLOYEES**

**PREVAILING WAGE SCHEDULE:**

The wages indicated on this wage schedule are the least permitted to be paid for the occupations indicated. When an employee works in more than one classification, the employer must record the number of hours worked in each classification at the prescribed hourly base rate.

**OVERTIME:**

Overtime is to be paid after an employee works eight (8) hours a day or forty (40) hours a week, whichever gives the employee the greater wages. At least time and one-half the base rate is required for all overtime. A laborer, workman or mechanic and an employer may enter into a written agreement or a collective bargaining agreement to work more than eight (8) hours a calendar day but not more than ten (10) hours a calendar day for the straight time hourly rate. Wage violations or questions should be directed to the designated Engineer or to the undersigned.

Ryan Griffith, Director  
Division of Construction Procurement  
Frankfort, Kentucky 40622



Fringe benefit amounts are applicable for all hours worked except when otherwise noted.

These rates are listed pursuant to the Kentucky Determination No. CR-10-II- HWY dated July 12, 2010.

**NOTE: Both Kentucky Determination No. CR-10-II-HWY and Federal Decision No. KY215 dated October 22, 2010 apply to this project. Both sets of wage rates are included. If there is a difference in the two wages for the same classification, the Contractor is required to pay the higher of the two listed wages.**

No laborer, workman or mechanic shall be paid at a rate less than that of a Journeyman except those classified as bona fide apprentices.

Apprentices or trainees shall be permitted to work as such subject to Administrative Regulations adopted by the Commissioner of Workplace Standards. Copies of these regulations will be furnished upon request from any interested person.

Before using apprentices on the job the contractor shall present to the Contracting Officer written evidence of registration of such employees in a program of a State apprenticeship and training agency approved and recognized by the U. S. Bureau of Apprenticeship and Training. In the absence of such a State agency, the contractor shall submit evidence of approval and registration by the U. S. Bureau of Apprenticeship and Training.

The contractor shall submit to the Contracting Officer, written evidence of the established apprenticeship-journeyman ratios and wage rates in the project area, which will be the basis for establishing such ratios and rates for the project under the applicable contract provisions.

**TO: EMPLOYERS/EMPLOYEES**

**PREVAILING WAGE SCHEDULE:**

**The wages indicated on this wage schedule are the least permitted to be paid for the occupations indicated. When an employee works in more than one classification, the employer must record the number of hours worked in each classification at the prescribed hourly base rate.**

**OVERTIME:**

**Overtime is to be paid after an employee works eight (8) hours a day or forty (40) hours a week, whichever gives the employee the greater wages. At least time and one-half the base rate is required for all overtime. A laborer, workman or mechanic and an employer may enter into a written agreement or a collective bargaining agreement to work more than eight (8) hours a calendar day but not more than ten (10) hours a calendar day for the straight time hourly rate. Wage violations or questions should be directed to the designated Engineer or the undersigned.**

Ryan Griffith, Director  
Division of Construction Procurement  
Frankfort, Kentucky 40622

CONTRACT ID: 101344  
COUNTY: CLAY  
PROPOSAL: NCPD 3000 (873)

PAGE: 1  
LETTING: 12/10/10  
CALL NO: 100

LINE NO	ITEM	DESCRIPTION	APPROXIMATE QUANTITY	UNIT	UNIT PRICE	AMOUNT
SECTION 0001		PAVING				
ALT GROUP AA1		ALTERNATE 1 - ASPHALT PAVEMENT				
0010	00003	CRUSHED STONE BASE	58,357.000	TON		
0020	00078	CRUSHED AGGREGATE SIZE NO 2	70,920.000	TON		
0030	00190	LEVELING & WEDGING PG64-22	250.000	TON		
0040	00212	CL2 ASPH BASE 1.00D PG64-22	39,484.000	TON		
0050	00301	CL2 ASPH SURF 0.38D PG64-22	5,451.000	TON		
0060	00340	CL2 ASPH SURF 0.38D PG76-22	2,138.000	TON		
0070	02200	ROADWAY EXCAVATION	2,780,338.000	CUYD		
0080	10203ND	PAVEMENT ADJUSTMENT	( 1.00)	LS	452,245.00	452,245.00
0090	20696ES403	CL2 ASPH BASE 1.0D PG76-22	10,180.000	TON		
SECTION 0002		PAVING				
ALT GROUP AA2		ALTERNATE 2 - ALPHALT PAVEMENT WITH GEOGRID				
0100	00003	CRUSHED STONE BASE	120,147.000	TON		
0110	00005	GEOGRID REINFORCEMENT FOR SUBGRADE	59,444.000	SQYD		
0120	00078	CRUSHED AGGREGATE SIZE NO 2	509.000	TON		
0130	00190	LEVELING & WEDGING PG64-22	250.000	TON		
0140	00212	CL2 ASPH BASE 1.00D PG64-22	26,594.000	TON		
0150	00301	CL2 ASPH SURF 0.38D PG64-22	5,451.000	TON		
0160	00340	CL2 ASPH SURF 0.38D PG76-22	2,138.000	TON		
0170	02200	ROADWAY EXCAVATION	2,774,485.000	CUYD		
0180	10203ND	PAVEMENT ADJUSTMENT	( 1.00)	LS	452,245.00	452,245.00
0190	20696ES403	CL2 ASPH BASE 1.0D PG76-22	10,180.000	TON		
SECTION 0003		PAVING				
ALT GROUP AA3		ALTERNATE 3 - CONCRETE PAVEMENT				

CONTRACT ID: 101344  
COUNTY: CLAY  
PROPOSAL: NCPD 3000 (873)

PAGE: 2  
LETTING: 12/10/10  
CALL NO: 100

LINE NO	ITEM	DESCRIPTION	APPROXIMATE QUANTITY	UNIT	UNIT PRICE	AMOUNT
0200	00003	CRUSHED STONE BASE	49,764.000	TON		
0210	00078	CRUSHED AGGREGATE SIZE NO 2	70,544.000	TON		
0220	00190	LEVELING & WEDGING PG64-22	250.000	TON		
0230	00212	CL2 ASPH BASE 1.00D PG64-22	7,977.000	TON		
0240	00301	CL2 ASPH SURF 0.38D PG64-22	1,574.000	TON		
0250	00340	CL2 ASPH SURF 0.38D PG76-22	2,138.000	TON		
0260	02073	JPC PAVEMENT-9 IN	56,388.000	SQYD		
0270	02200	ROADWAY EXCAVATION	2,776,017.000	CUYD		
0280	10203ND	PAVEMENT ADJUSTMENT	( 1.00)	LS	218,597.00	218,597.00
0290	20696ES403	CL2 ASPH BASE 1.0D PG76-22	10,180.000	TON		
SECTION 0004		PAVING				
ALT GROUP AA4		ALTERNATE 4 - CONCRETE PAVEMENT WITH GEOGRID				
0300	00003	CRUSHED STONE BASE	87,254.000	TON		
0310	00005	GEOGRID REINFORCEMENT FOR SUBGRADE	58,153.000	SQYD		
0320	00078	CRUSHED AGGREGATE SIZE NO 2	509.000	TON		
0330	00190	LEVELING & WEDGING PG64-22	250.000	TON		
0340	00212	CL2 ASPH BASE 1.00D PG64-22	7,977.000	TON		
0350	00301	CL2 ASPH SURF 0.38D PG64-22	1,574.000	TON		
0360	00340	CL2 ASPH SURF 0.38D PG76-22	2,138.000	TON		
0370	02073	JPC PAVEMENT-9 IN	56,388.000	SQYD		
0380	02200	ROADWAY EXCAVATION	2,767,961.000	CUYD		
0390	10203ND	PAVEMENT ADJUSTMENT	( 1.00)	LS	218,597.00	218,597.00

CONTRACT ID: 101344  
COUNTY: CLAY  
PROPOSAL: NCPD 3000 (873)

PAGE: 3  
LETTING: 12/10/10  
CALL NO: 100

LINE NO	ITEM	DESCRIPTION	APPROXIMATE UNIT QUANTITY	UNIT PRICE	AMOUNT
0400	20696ES403	CL2 ASPH BASE 1.0D PG76-22	10,180.000 TON		
SECTION 0005 ROADWAY					
0410	00021	DRAINAGE BLANKET-EMBANKMENT	41,466.000 CUYD		
0420	01891	ISLAND HEADER CURB TYPE 2	50.000 LF		
0430	01984	DELINEATOR FOR BARRIER-WHITE	54.000 EACH		
0440	02003	RELOCATE TEMP CONC BARRIER	3,895.000 LF		
0450	02014	BARRICADE-TYPE III	12.000 EACH		
0460	02159	TEMP DITCH	20,241.000 LF		
0470	02220	FLOWABLE FILL	1,640.000 CUYD		
0471	02223	GRANULAR EMBANKMENT (ADDED: 12-1-10)	2,915.000 CUYD		
0480	02242	WATER	9,475.000 MGAL		
0490	02262	FENCE-WOVEN WIRE TYPE 1	2,543.000 LF		
0500	02351	GUARDRAIL-STEEL W BEAM-S FACE	14,738.000 LF		
0510	02363	GUARDRAIL CONNECTOR TO BRIDGE END TY A	4.000 EACH		
0520	02369	GUARDRAIL END TREATMENT TYPE 2A	4.000 EACH		
0530	02373	GUARDRAIL END TREATMENT TYPE 3	14.000 EACH		
0540	02381	REMOVE GUARDRAIL	4,396.000 LF		
0550	02391	GUARDRAIL END TREATMENT TYPE 4A	4.000 EACH		
0560	02429	RIGHT-OF-WAY MONUMENT TYPE 1	80.000 EACH		
0570	02432	WITNESS POST	71.000 EACH		
0580	02483	CHANNEL LINING CLASS II	12,866.000 TON		

CONTRACT ID: 101344  
COUNTY: CLAY  
PROPOSAL: NCPD 3000 (873)

PAGE: 4  
LETTING: 12/10/10  
CALL NO: 100

LINE NO	ITEM	DESCRIPTION	APPROXIMATE QUANTITY	UNIT	UNIT PRICE	AMOUNT
0590	02484	CHANNEL LINING CLASS III	8,782.000	TON		
0600	02545	CLEARING AND GRUBBING (108 ACRES)	( 1.00)	LS		
0610	02562	SIGNS	349.000	SQFT		
0620	02585	EDGE KEY	88.000	LF		
0630	02599	FABRIC-GEOTEXTILE TYPE IV	278,569.000	SQYD		
0640	02600	FABRIC GEOTEXTILE TY IV FOR PIPE	24,732.000	SQYD	2.00	49,464.00
0650	02650	MAINTAIN & CONTROL TRAFFIC	( 1.00)	LS		
0660	02671	PORTABLE CHANGEABLE MESSAGE SIGN	2.000	EACH		
0670	02696	SHOULDER RUMBLE STRIPS-SAWED	7,369.000	LF		
0680	02701	TEMP SILT FENCE	20,241.000	LF		
0690	02703	SILT TRAP TYPE A	184.000	EACH		
0700	02704	SILT TRAP TYPE B	184.000	EACH		
0710	02705	SILT TRAP TYPE C	184.000	EACH		
0720	02706	CLEAN SILT TRAP TYPE A	1,566.000	EACH		
0730	02707	CLEAN SILT TRAP TYPE B	1,566.000	EACH		
0740	02708	CLEAN SILT TRAP TYPE C	1,566.000	EACH		
0750	02709	CLEAN TEMP SILT FENCE	182,169.000	LF		
0760	02726	STAKING	( 1.00)	LS		
0770	02898	RELOCATE CRASH CUSHION	2.000	EACH		
0780	03171	CONCRETE BARRIER WALL TYPE 9T	4,075.000	LF		
0790	05950	EROSION CONTROL BLANKET	9,423.000	SQYD		

CONTRACT ID: 101344  
COUNTY: CLAY  
PROPOSAL: NCPD 3000 (873)

PAGE: 5  
LETTING: 12/10/10  
CALL NO: 100

LINE NO	ITEM	DESCRIPTION	APPROXIMATE QUANTITY	UNIT	UNIT PRICE	AMOUNT
0800	05952	TEMP MULCH	884,848.000	SQYD		
0810	05953	TEMP SEEDING AND PROTECTION	443,565.000	SQYD		
0820	05966	TOPDRESSING FERTILIZER	17.000	TON		
0830	05985	SEEDING AND PROTECTION	106,286.000	SQYD		
0840	06511	PAVE STRIPING-TEMP PAINT-6 IN	46,740.000	LF		
0850	06514	PAVE STRIPING-PERM PAINT-4 IN	66,168.000	LF		
0860	06531	PAVE STRIPING REMOVAL-6 IN	16,770.000	LF		
0870	06570	PAVE MARKING-PAINT CROSS-HATCH	33,735.000	SQFT		
0880	06588	PAVEMENT MARKER TY IVA-BY TEMP	195.000	EACH		
0890	06589	PAVEMENT MARKER TYPE V-MW	50.000	EACH		
0900	06591	PAVEMENT MARKER TYPE V-BY	180.000	EACH		
0910	06600	REMOVE PAVEMENT MARKER TYPE V	98.000	EACH		
0920	08903	CRASH CUSHION TY VI CLASS BT TL3	2.000	EACH		
0930	20210EP69	COHESIVE PILE CORE	20.000	CUYD		
0940	20458ES403	CENTERLINE RUMBLE STRIPS	11,685.000	LF		
0950	21661ES706	BORE AND JACK PIPE	229.000	LF		
0960	22854EN	PAVE STRIPE PERM-6 IN HD21-WHITE	9,588.000	LF		
0970	22855EN	PAVE STRIPE PERM-6 IN HD21-YELLOW	6,650.000	LF		
0980	23124EN	BORE AND JACK PIPE-48 IN	223.000	LF		
0990	23131ER701	PIPELINE VIDEO INSPECTION	2,598.000	LF		

SECTION 0006 DRAINAGE

CONTRACT ID: 101344  
COUNTY: CLAY  
PROPOSAL: NCPD 3000 (873)

PAGE: 6  
LETTING: 12/10/10  
CALL NO: 100

LINE NO	ITEM	DESCRIPTION	APPROXIMATE QUANTITY	UNIT	UNIT PRICE	AMOUNT
1000	00078	CRUSHED AGGREGATE SIZE NO 2	37.000	TON		
1010	00462	CULVERT PIPE-18 IN	607.000	LF		
1020	00464	CULVERT PIPE-24 IN	481.000	LF		
1030	00466	CULVERT PIPE-30 IN	1,114.000	LF		
1040	00468	CULVERT PIPE-36 IN	1,103.000	LF		
1050	00470	CULVERT PIPE-48 IN	95.000	LF		
1060	00471	CULVERT PIPE-54 IN	848.000	LF		
1070	00472	CULVERT PIPE-60 IN	188.000	LF		
1080	00522	STORM SEWER PIPE-18 IN	149.000	LF		
1090	00528	STORM SEWER PIPE-36 IN	154.000	LF		
1100	00529	STORM SEWER PIPE-42 IN	287.000	LF		
1110	00530	STORM SEWER PIPE-48 IN	169.000	LF		
1120	01000	PERFORATED PIPE-4 IN	17,291.000	LF		
1130	01010	NON-PERFORATED PIPE-4 IN	2,021.000	LF		
1140	01012	NON-PERFORATED PIPE-8 IN	1,525.000	LF		
1150	01032	PERF PIPE HEADWALL TY 4-4 IN	34.000	EACH		
1160	01034	PERF PIPE HEADWALL TY 4-8 IN	3.000	EACH		
1170	01451	S & F BOX INLET-OUTLET-24 IN	2.000	EACH		
1180	01452	S & F BOX INLET-OUTLET-30 IN	1.000	EACH		
1190	01453	S & F BOX INLET-OUTLET-36 IN	5.000	EACH		
1200	01490	DROP BOX INLET TYPE 1	15.000	EACH		

CONTRACT ID: 101344  
COUNTY: CLAY  
PROPOSAL: NCPD 3000 (873)

PAGE: 7  
LETTING: 12/10/10  
CALL NO: 100

LINE NO	ITEM	DESCRIPTION	APPROXIMATE QUANTITY	UNIT	UNIT PRICE	AMOUNT
1210	01493	DROP BOX INLET TYPE 2	1.000	EACH		
1220	01538	DROP BOX INLET TYPE 7	1.000	EACH		
1230	01642	JUNCTION BOX-18 IN	1.000	EACH		
1240	01643	JUNCTION BOX-24 IN	1.000	EACH		
1250	01767	MANHOLE TYPE C	1.000	EACH		
1260	08100	CONCRETE-CLASS A	80.880	CUYD		
1270	08150	STEEL REINFORCEMENT	4,972.500	LB		
1280	23057NN	MODIFIED ENDWALL TY U-42 IN	1.000	EACH		
1290	23058NN	MODIFIED ENDWALL TY U-48 IN	1.000	EACH		
SECTION 0007 BRIDGE						
1300	02231	STRUCTURE GRANULAR BACKFILL	88.000	CUYD		
1310	02625	REMOVE HEADWALL	2.000	EACH		
1320	02998	MASONRY COATING	220.000	SQYD		
1330	03299	ARMORED EDGE FOR CONCRETE	80.000	LF		
1340	08002	STRUCTURE EXCAV-SOLID ROCK	192.000	CUYD		
1350	08003	FOUNDATION PREPARATION 26190	( 1.000)	LS		
1360	08003	FOUNDATION PREPARATION 26191	( 1.000)	LS		
1370	08019	CYCLOPEAN STONE RIP RAP	556.000	TON		
1380	08033	TEST PILES	32.000	LF		
1390	08039	PRE-DRILLING FOR PILES	91.000	LF		
1400	08046	PILES-STEEL HP12X53	158.000	LF		



CONTRACT ID: 101344  
COUNTY: CLAY  
PROPOSAL: NCPD 3000 (873)

PAGE: 8  
LETTING: 12/10/10  
CALL NO: 100

LINE NO	ITEM	DESCRIPTION	APPROXIMATE QUANTITY	UNIT	UNIT PRICE	AMOUNT
1410	08094	PILE POINTS-12 IN	12.000	EACH		
1420	08100	CONCRETE-CLASS A	782.500	CUYD		
1430	08104	CONCRETE-CLASS AA	86.800	CUYD		
1440	08150	STEEL REINFORCEMENT	115,012.000	LB		
1450	08151	STEEL REINFORCEMENT-EPOXY COATED	14,057.000	LB		
1460	08669	PRECAST PC BOX BEAM SB21	351.000	LF		
1470	21532ED	RAIL SYSTEM TYPE III	120.000	LF		
SECTION 0008 TRAINEES						
1480	02742	TRAINEE PAYMENT REIMBURSEMENT 2 ARTICULATING OFF ROAD TRUCK DRIVERS	3,200.000	HOUR		
SECTION 0009 MOBILIZATION / DEMOBILIZATION						
1490	02568	MOBILIZATION (NO MORE THAN 5%)		LUMP		
1500	02569	DEMOBILIZATION (AT LEAST 1.5%)		LUMP		
		TOTAL BID				